



PLAY.  
PERFORM.  
COMPETE.  
TOGETHER.

# 2025-26 NFHS Volleyball Rules PowerPoint

Rules Changes  
Editorial Changes  
Points of Emphasis

Copyright© 2025 National Federation of State High School Associations. All Rights Reserved.

This copyrighted power point is presented by the NFHS. This material shall only be reproduced or distributed by member state associations for teaching and training purposes. Distribution to the public is prohibited without the express written consent from the NFHS. Please contact Davis Whitfield, COO at

[dwhitfield@nfhs.org](mailto:dwhitfield@nfhs.org) with requests.



# 2025-26 NFHS Volleyball Rules Changes

# THE BALL

## 3-2-1 NOTE (NEW)

- Beginning with the 2026-27 school year, state associations may adopt the use of a non-smooth or textured volleyball. There are no restrictions on color or shape of panels for textured volleyballs.

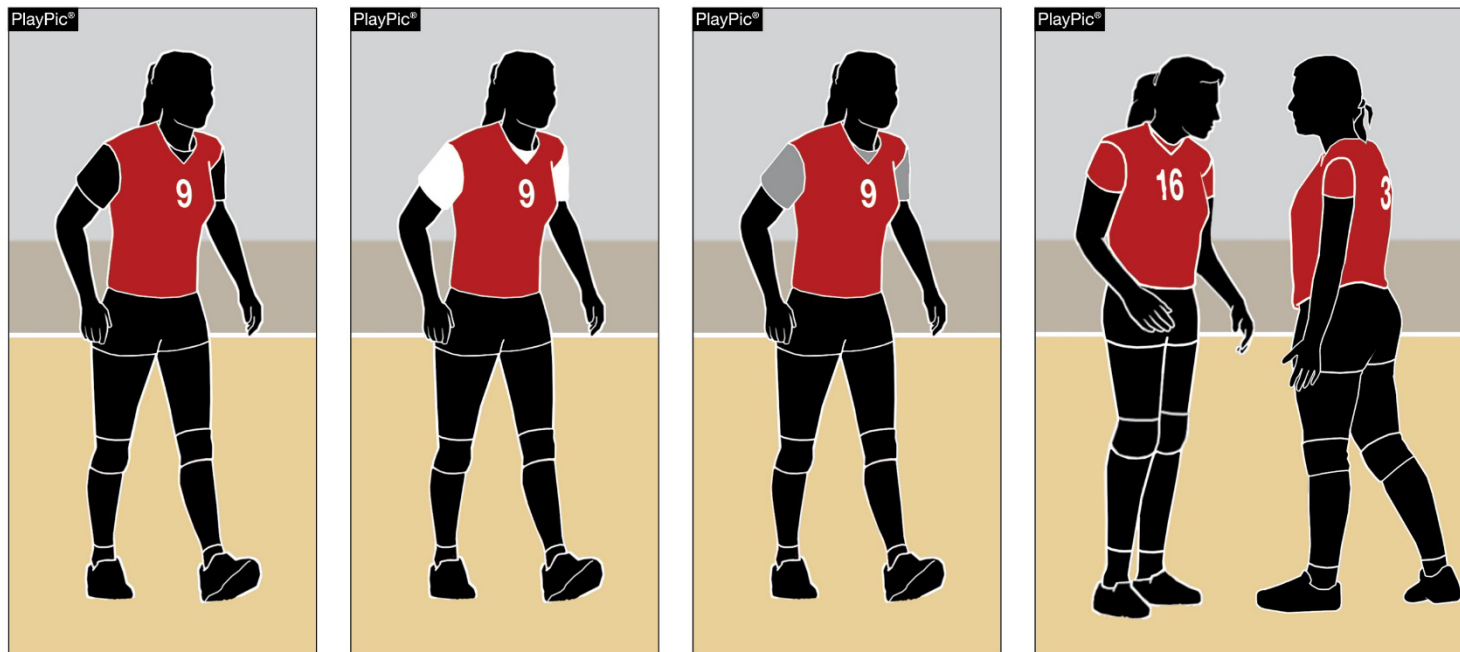




# LEGAL UNIFORM

## 4-2-1h(3), 4-2-1i(2)

- Team members may wear black, white or gray undergarments in addition to undergarments that match the predominant color of the uniform. However, all team members, other than the libero, must wear matching colors.



# LEGAL UNIFORM

## 4-2-4d, f

- Beginning July 1, 2029, the number on the front of the uniform must be centered on the upper half of the uniform top, eliminating the measurement requirements from the shoulder seam and neckline.



# LEGAL UNIFORM

## 4-2-4d, f

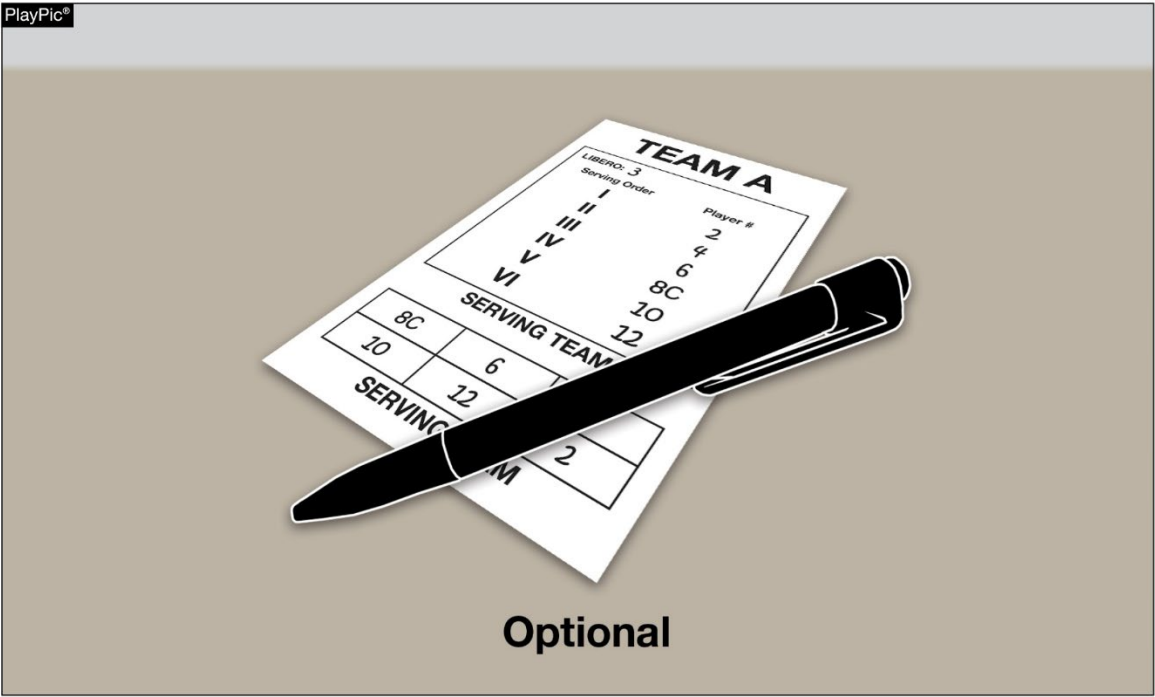
- Numbers **not centered** on the upper half of the uniform top will be illegal beginning with the 2029 season. When a team cannot begin the match with six players wearing legal uniforms, a loss of rally/point shall be awarded to the opponent at the beginning of the match, and the state association shall be notified.



# OFFICIALS UNIFORM AND EQUIPMENT, SECOND REFEREE RESPONSIBILITIES

## 5-3-2b, 5-5-3b(9)

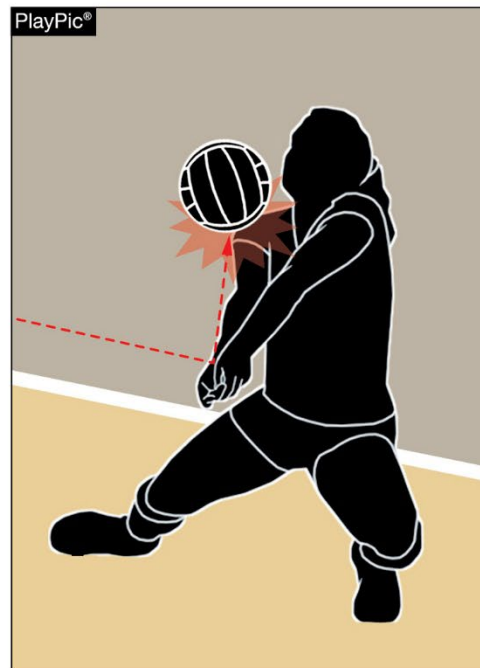
- Eliminates the requirement for second referees to carry and use a lineup card to check the starting lineups. Officials may use each coach's submitted lineup sheet to check the starting lineup. Newer officials can still use the lineup card as a training tool.



# CONTACTING THE BALL

## 9-4-8c (NEW)

- Eliminates the judgment call of a multiple contact fault in a single attempt to play the ball on the second team hit if the ball is next contacted by a teammate. This allows for play to continue when multiple contacts on the second team contact do not create an advantage for the offending team.
- Prolonged contact and multiple attempts to play the ball are still faults.

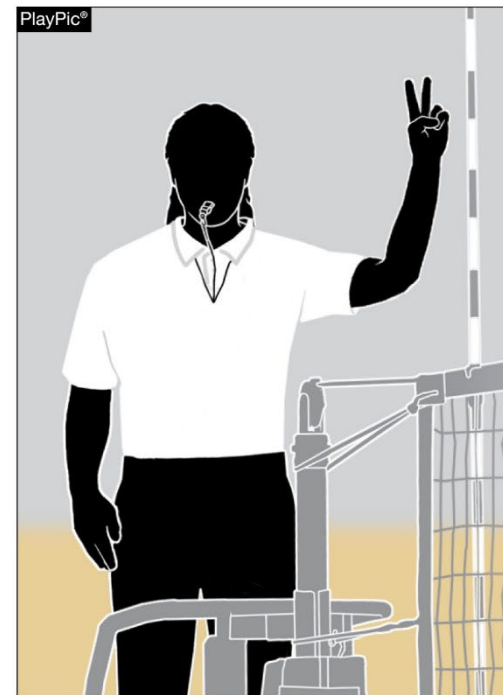
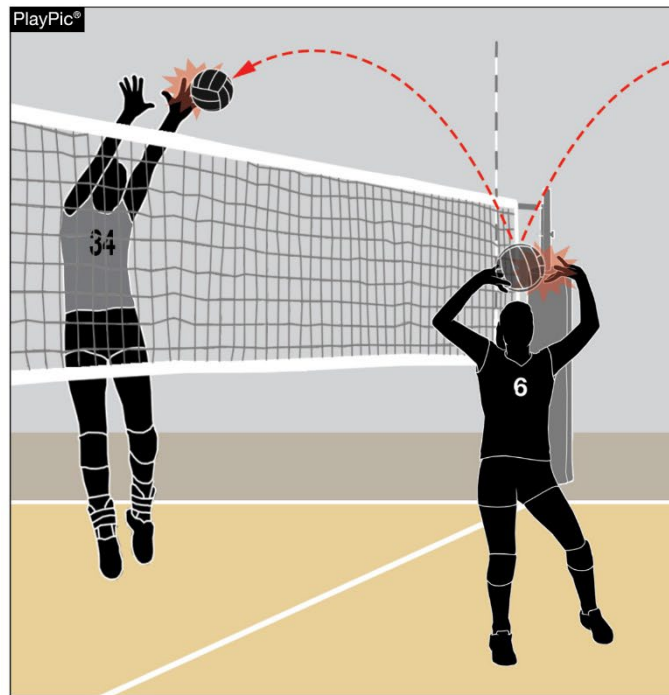




# CONTACTING THE BALL

## 9-4-8c (NEW)

- If a player contacts the ball multiple times during one attempt to play the ball on a team's second hit and an opponent is next to contact the ball, a multiple contact fault has occurred.



# CONTACTING THE BALL

## 9-4-8c (NEW)

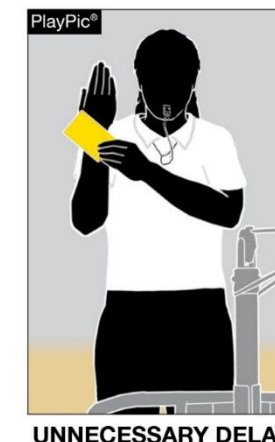
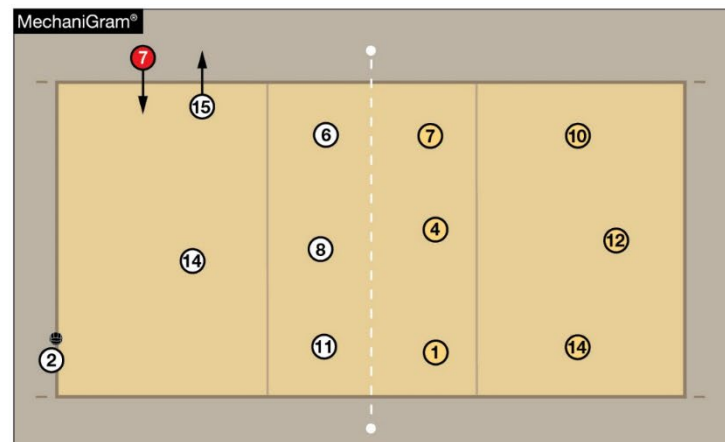
- If a player contacts the ball multiple times during one attempt to play the ball on a team's second hit and players from both teams next contact the ball at the same time in the plane of the net – legal and play continues.



# LIBERO REPLACEMENT

## 10-4 PENALTIES 1

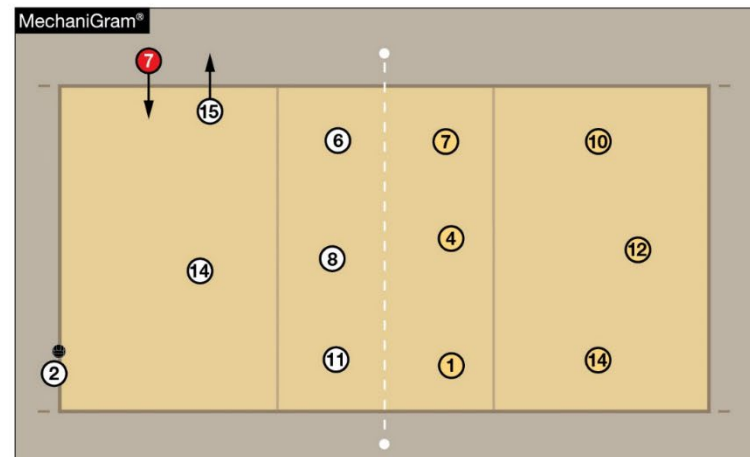
- The penalty administration for an illegal libero replacement is now an unnecessary delay if identified **BEFORE contact of serve**.



# LIBERO REPLACEMENT

## 10-4 PENALTIES 1

- If an illegal libero replacement occurs and is identified **AFTER contact of serve**, it is an illegal alignment fault.



ILLEGAL ALIGNMENT





# 2025 NFHS Volleyball Editorial Changes

# EQUIPMENT AND ACCESSORIES, LEGAL UNIFORM

## 4-1 & 4-2 PENALTIES

- Clarifies when a team cannot begin a match with six players without body paint or glitter, after attempting to remove, the same penalty for illegal uniform applies.
  - A loss of rally/point awarded to the opponent at the beginning of the match and the state association shall be notified to determine further action or penalty as deemed necessary.





# Additional Editorial Changes

- 4-2-4c – Reworded after the implementation of the clearly contrasting uniform number rule.
- 7-1-2a; 7-1-4; 7-1-4 PEN 1 & 2; How to Use the Signals (Signal 1) – Removed the word “accurate” – only requiring a written lineup as inaccurate lineups can be handled with rule 7-1-4.



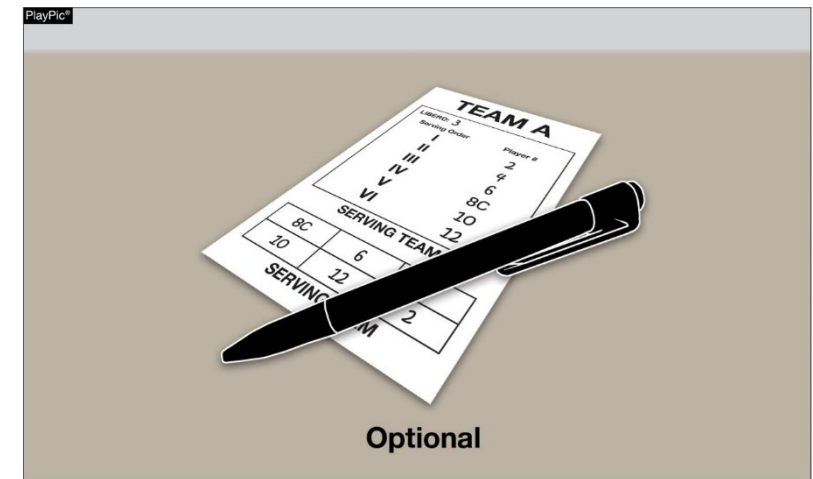
# 2025 NFHS Volleyball Points of Emphasis





# LINEUP CARD

- The second referee's lineup card is an **optional** tool to record each team's lineup.
- It is the choice of the second referee to verify each team's starting lineup prior to each set by using the coaches' submitted lineup sheets or the lineup card.
- It is recommended newer officials use the lineup card as a tool to track rotations.
- Regardless of the method used, communication with scorers is crucial in pre-match and during the match to ensure that players are in correct service order.



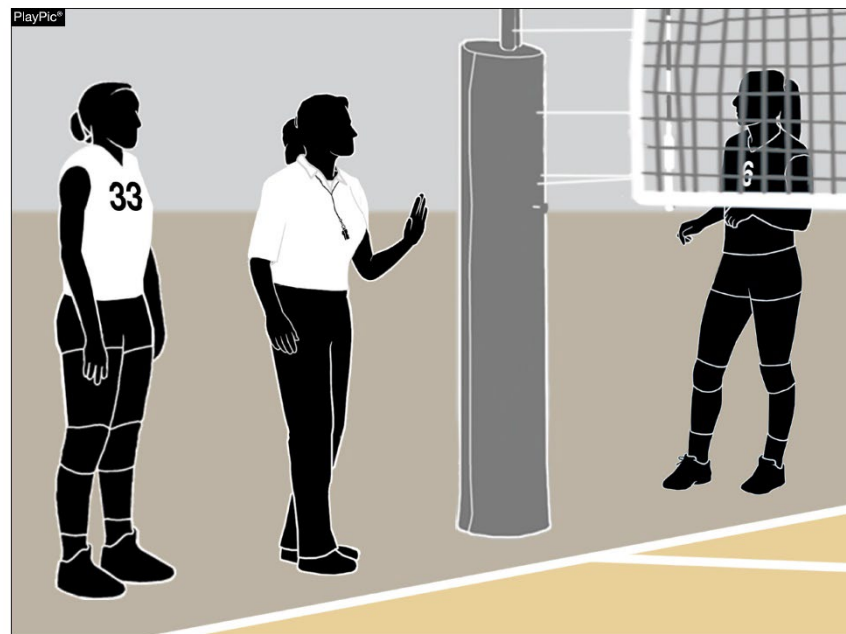
# LINEUP CARD - Substitution

- If the second referee does not use a lineup card and a substitution is requested, the second referee simply authorizes the entry and turns slightly at an angle to ensure the scorer has recorded the substitution.



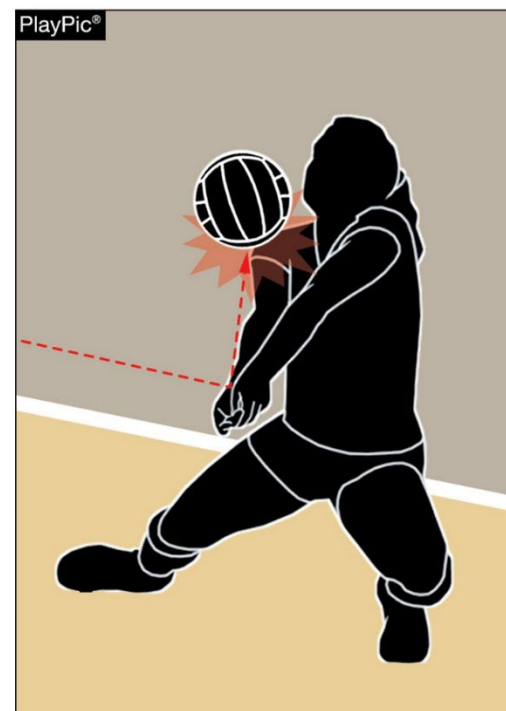
# LINEUP CARD - Substitution

- If each team has a substitute(s), the second referee should hold up a hand to indicate to the substitute to wait until the second referee has completed the opposing team's request and entry.



# BALL HANDLING

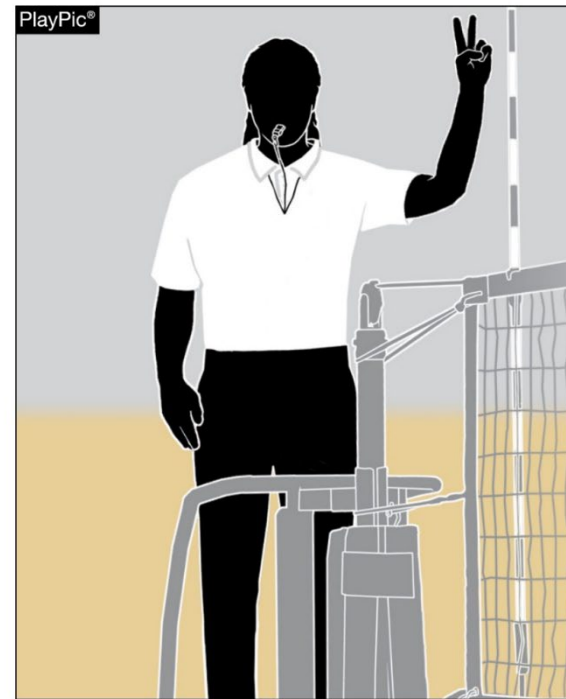
- As the sport has evolved, the rules have adapted to allow multiple contacts on the ball with the caveat that the first referee should only judge the length of time on a body part, whistling a catch/throw or illegal contact, along with the number of contacts made on the same attempt by one player.





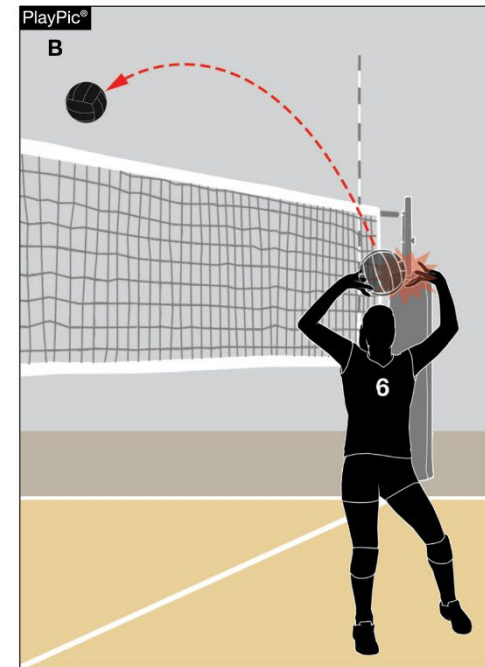
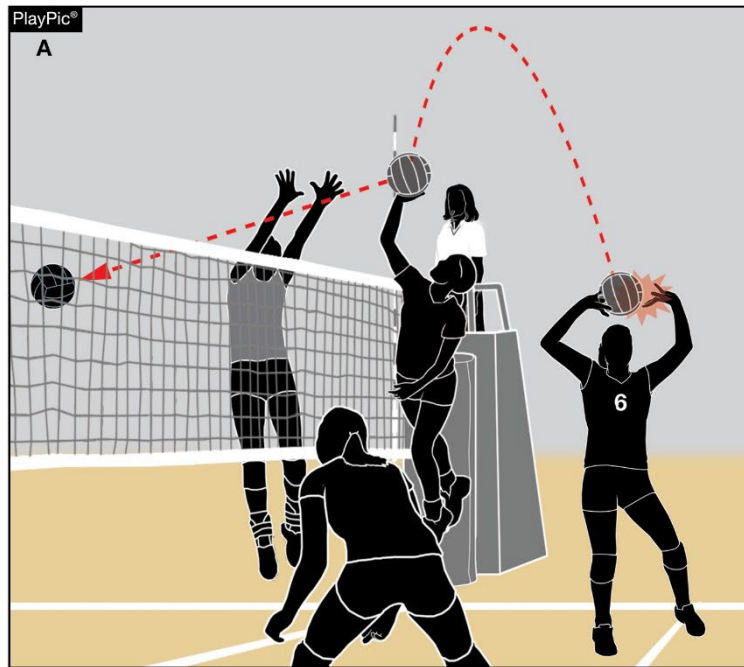
# BALL HANDLING

- If there is prolonged contact, a catch/throw or other illegal contact, or a team has multiple contacts on the second hit and the ball is not next played by a teammate, the first referee needs to be prepared to signal those faults.



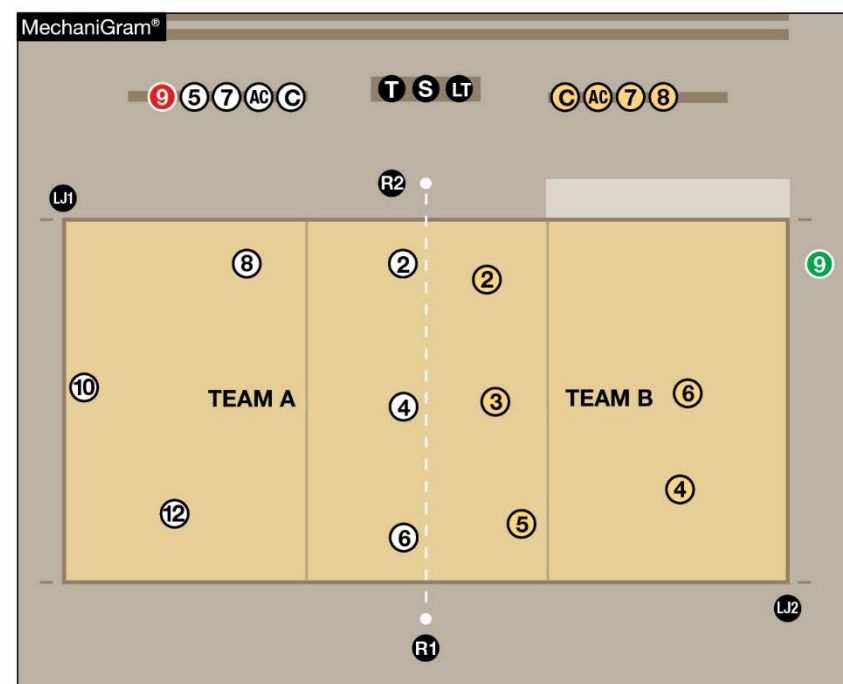
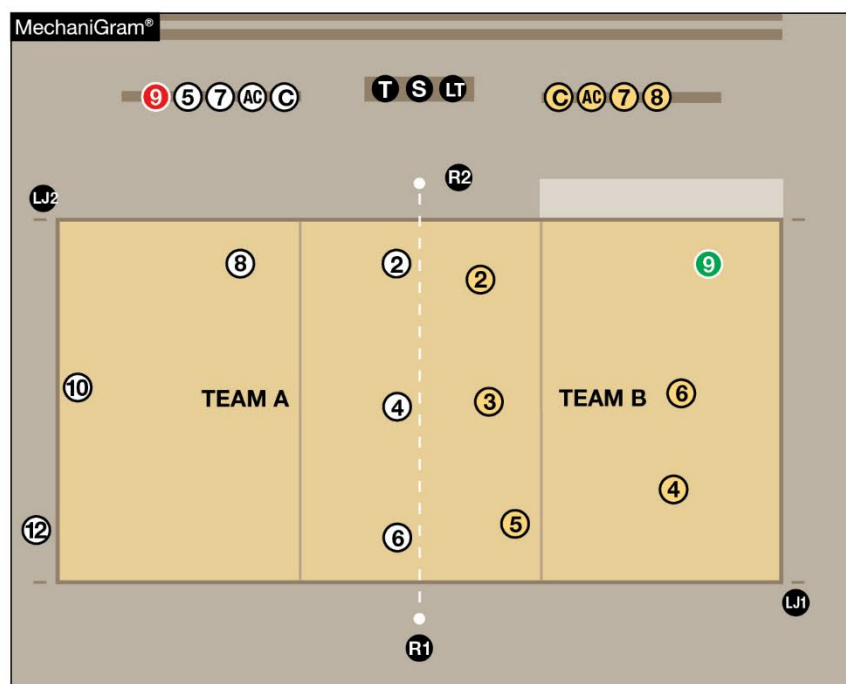
# BALL HANDLING

- First referees still must judge the contact on a second team hit to determine its legality; however, as long as it is next played by a teammate (A), it is legal. If the ball crosses over the net or is not next played by a teammate (B), it becomes a fault.



# R1 ASSIGNING LJs

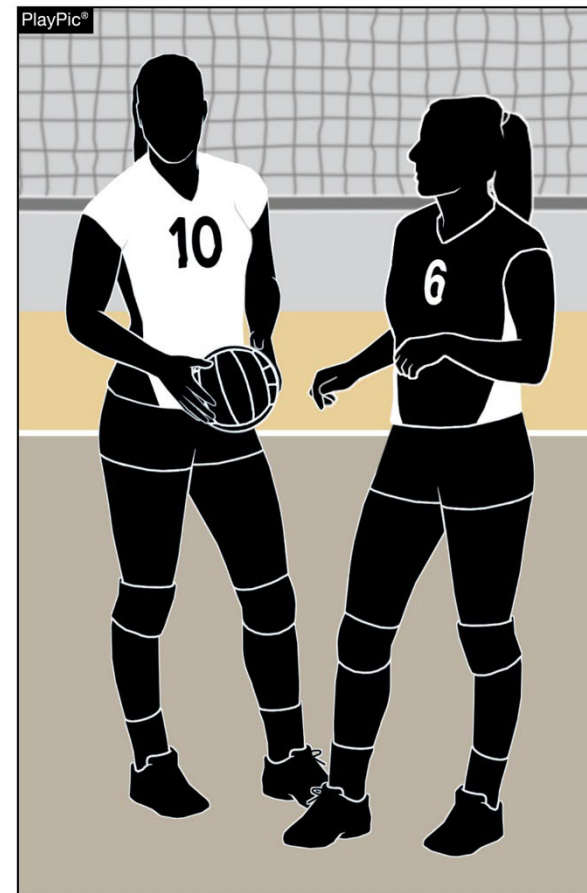
- For states who select to remain on the same side of the court throughout the match, the default is for line judges to switch sides between sets to allow for equitable adjudication of the lines. However, rule 5-4-1g provides the first referee the authority to keep line judges on the same side throughout the match to create the best environment for match administration. Any divergence from the default positioning should be communicated to both head coaches.



# UNIFORMS — CONTRASTING COLORS



- NFHS Volleyball Rules require the libero jersey to clearly contrast from the team jersey and the body of the uniform number must clearly contrast from the uniform top. These rules are in place to assist officials in quickly identifying the libero as well as player numbers. There are infinite color shades and combinations which makes it difficult to create rules defining what colors contrast from one another.



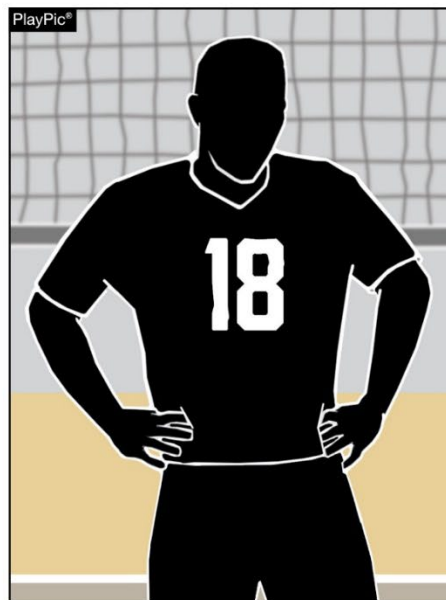


# UNIFORMS — CONTRASTING COLORS

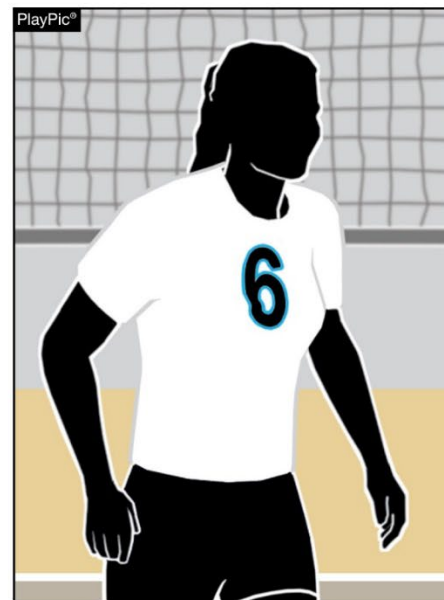
- Tips for selecting color combinations:
  - If the uniform is light colored, such as white, the body of the number should be dark or even black.
  - If the jersey is dark, the body of the number should be light or even white.
  - Avoid too many colors on the team jersey as it limits the colors for a legal libero jersey and uniform numbers.



ILLEGAL



LEGAL



LEGAL



**PLAY.  
PERFORM.  
COMPETE.  
TOGETHER.**

# Thank You

**National Federation of State High School Associations**

NFHS.org

Phone # 317-972-6900

Email



@NFHS1920



@NFHS\_org